

TB6560

3A FULL BRIDGE STEPMOTOR DRIVER

INPUT: 10-35VDC (24 Nominal)

OUTPUT: Selectable up to 3A max.

STEP: Full & 1/2-1/8-1/16 Microstep

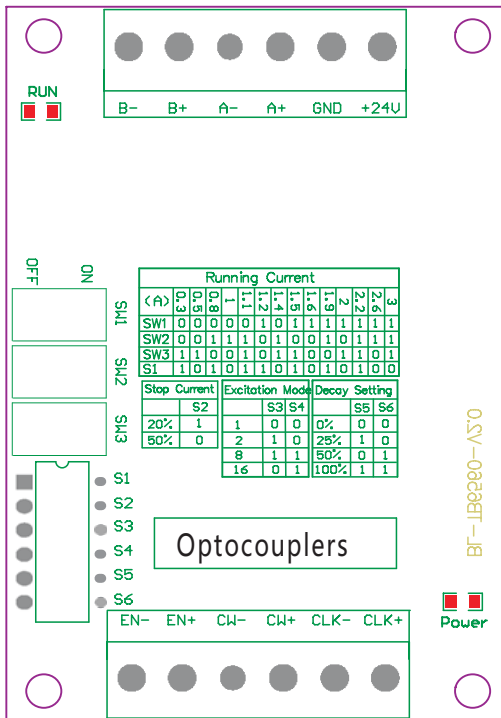
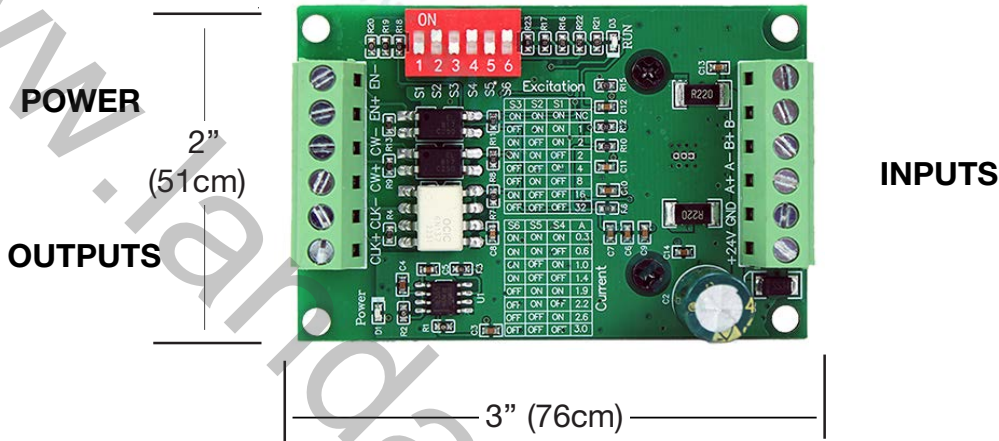
Full bridge driver for 4 or 6 wire hybrid steppermotors. Automatic drop to Hold

current with no step Input. Switch Selectable output current. .3A-3A

Over temperature & current Protected. Under Voltage Shutdown

Opto isolated Step, Direction & Enable Inputs. (+5V Level) Terminal strips in/out.

Power and Run LEDs



Wiring Terminal symbol	Description
+24V, GND	Power positive and negative
A+, A-	Motor phase A
B+, B-	Motor phase B
CLK+, CLK-	Pulse positive and negative
CW+, CW-	Direction positive and negative
EN+, EN-	Enable positive and negative

Warning:

- 1: Check the connection twice! The6560 chipset can be damaged if the motor or the power supply are not connected properly.
- 2: Don't connect a motor with a rated current in excess of 3A to this driver.
- 3: Do not set the current higher than the motor rated current!

