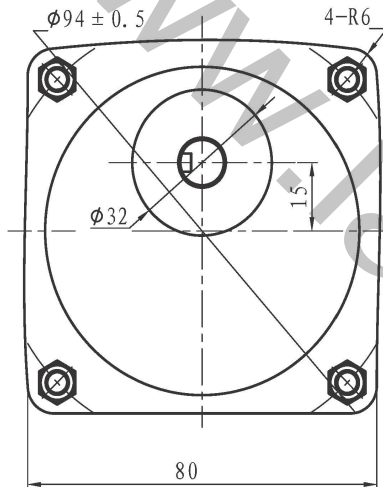
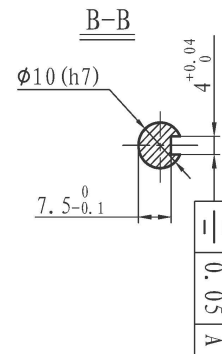
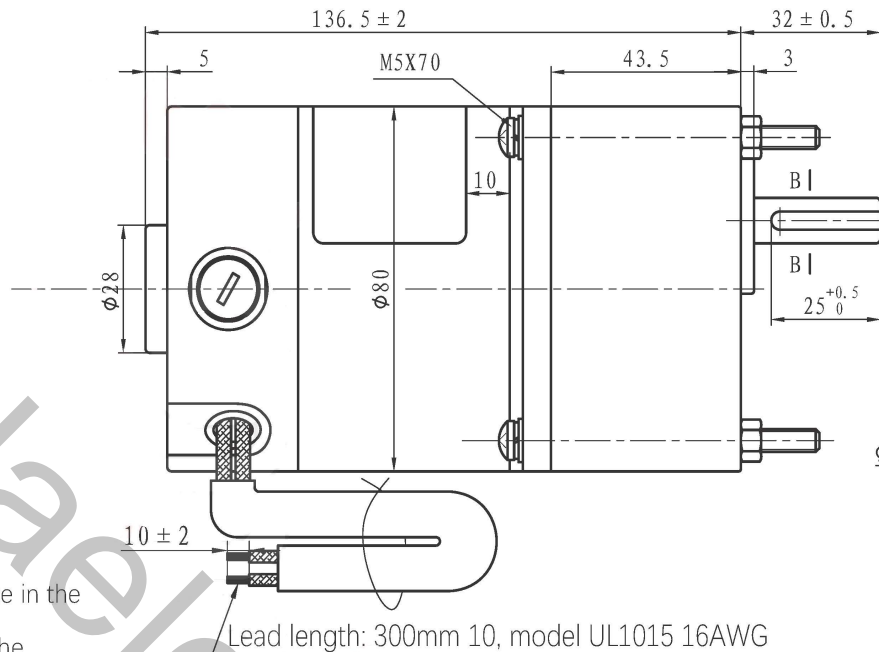


ZDH-DC20190509001

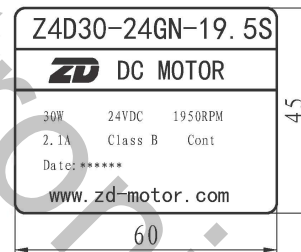


Technical requirements:

1. Basic parameters of the motor are as the data of nameplate in the drawing (the date is determined by the delivery time);
2. The red lead wire is connected to the black lead wire and the black lead wire is connected to the negative.
3. Lead wire length: 300mm 10, model: UL1015 specification: 16AWG;
4. Paste the nameplate as shown in the figure, 10mm away from the front end cover;



nameplate

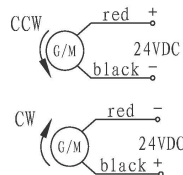


Reducer nameplate



Motor basic performance parameters table

	model	Z4D30-24GN-19.5S	Reducer model	4GN200K
	Rated voltage	24VDC	Slow progression	4
	Rated power	30W	Direction of rotation of gearbox output shaft and motor shaft	same
借(通)用件登记	Rated current	2.7A ± 10%	Gear box rated torque	8N.m
旧底图总号	Rated speed	1950rpm ± 10%	Bearing type	Rolling bearing
	Rated torque	0.14N.m	Gearbox construction	one-piece
	No-load current	≤ 1.4A	Transmission efficiency	66 %
底图总号	No-load speed	2500rpm ± 10%	noise	<60dB (A) (L=40cm)
	week	Cont	Motor wiring diagram	
签 字	Insulation resistance	>20MΩ		
	Brush life	2000h (External brush can be replaced)		
	Dielectric strength	660V/S		
日 期	Insulation class	B		
	Protection grade	IP20		
	Service ambient temperature	-10℃ ~ +40℃		



										宁波中大力德智能传动股份有限公司			
												产品型号	Z4D30-24GN-19.5S 4GN200K
标记	处数	分区	更改文件号	签字	年、月、日							整机外形图	
设计				标准化			阶段标记		重量		比例		
校对							S				FULL	零件编号	ZDH-DC20190509001
审核													
工艺				批准			共 1 张		第 1 张			客户名称	